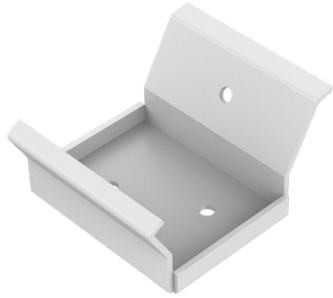
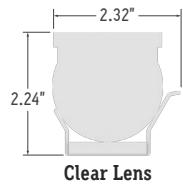


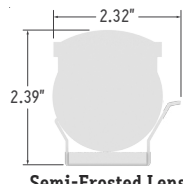
Perspective View



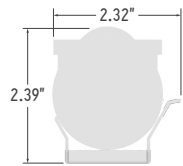
Assembled End Views



Clear Lens



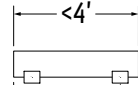
Semi-Frosted Lens
Frosted Lens
Asymmetric Lens



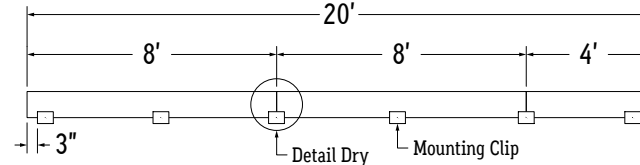
Optic Lens

DRY LOCATION

1. Measure area where luminaire will be installed. Use a chalk line to ensure a straight installation.
2. Mark location where mounting clips will be installed along chalk line.
3. Use 3 mounting clips every 8' or 2 if fixture is 4' or shorter.

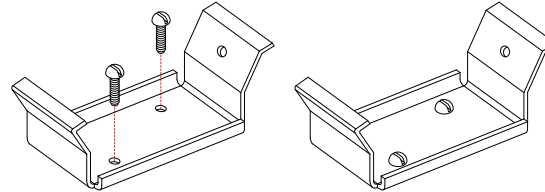


4. Use 1 mounting clip every 4' + 1.
Example: 8' + 8' + 4' = 2 MC + 2 MC + 1MC + 1MC = 6 MC total.
Use a mounting clip at the joint between two fixtures.



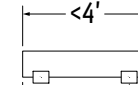
5. Lay mounting clips and pre-drill using proper drill bit for surface and screw size.
Recommendation: 8/32 x 1" screw.
Note: Allow 0.25" clearance for lateral expansion of assembled mounting clips.
Only install mounting clips on flat, even surfaces.

6. Screw mounting clips to surface, then snap fixture into mounting clips.



WET LOCATION

1. Measure area where luminaire will be installed. Use a chalk line to ensure a straight installation.
2. Mark location where mounting clips will be installed along chalk line.
3. Use 3 mounting clips every 8' or 2 if fixture is 4' or shorter.



4. Use 2 mounting clips per fixture.
Example: 8' + 8' + 4' = 2 MC + 2 MC + 2MC = 6 MC total.
Push fixtures together at each connection until end caps touch.

