

GENERAL FEATURES	
<b>APPLICATIONS</b>	Ingrade Walk-Over, Accent, Decorative, Recessed Lighting
<b>LENS</b>	Clear, 50% Semi-Frosted, or 100% Frosted
<b>LENGTH</b>	Built to Order ( $\pm 0.25"$ Tolerance)
<b>CONSTRUCTION</b>	Aluminum Extrusion
<b>DRIVER</b>	Remote (Sold Separately)
<b>WEIGHT</b>	0.22 lbs per foot
<b>MOUNTING</b>	Mounting Channel (8' Segments)
<b>LISTING</b>	Wet (IP67) Location UL8750, CSA250 UL2108, CSA C22.2 #9
<b>TEMPERATURE RATINGS</b>	Operating / Startup: $-20^{\circ}$ to $48^{\circ}\text{C}$ ( $-4^{\circ}$ to $120^{\circ}\text{F}$ ) Storage: $-40^{\circ}$ to $76^{\circ}\text{C}$ ( $-40^{\circ}$ to $170^{\circ}\text{F}$ )
<b>INSTALLATION</b>	<a href="#">Link to Installation Instructions</a>



## HOW TO ORDER

- Generate product code based on specification options.  
**Example:** LLED8200-CR-F-3.6W-10V-IP67-WH
- Specify Mitered Corners, if applicable.  
**Example:** LLED8200-CR-90D / Qty. 2
- Specify Run Lengths.  
**Example:** 23'8", 12', 7'6"
- Specify number of 8' Luminaire Housing segments needed (required for concrete recessed applications).  
**Example:** 23'8" + 12' + 7'4" + 90D (12") + 90D (12") = 45' of luminaire.  
Order 6 luminaire housing segments (48' total) for field cutting.
- Specify Accessories. Refer to Accessories and Configurations to determine number of Connectors, End Caps, and other accessories needed. Some parts by others. Refer to Installation Instructions for additional information.

## TYPE

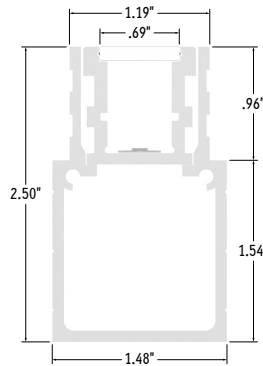
## PROJECT

## NOTES

## ABOUT

- Ingrade / Walk-Over luminaire for concrete recessed applications.
- Luminaire housing provides space for wiring and connections.

## END VIEW / DIMENSIONS



## LENS & APPEARANCE



Clear Lens  
Visible Diode Image  
(CL)



50% Semi-Frosted Lens  
Slight Diode Image  
(SF)



100% Frosted Lens  
No Diode Image (Line of Light)  
(F)

## LIGHT LOSS FACTORS

LENS	EFFICACY LOSS	DELIVERED LUMENS
Clear Lens (CL)	0%	103 Lumens per Watt
Semi-Frosted Lens (SF)	12.5%	90 Lumens per Watt
Frosted Lens (F)	25%	77 Lumens per Watt

**Note:** Lumens per Watt based on 35K CCT LED with Clear Lens.  
See Lamp Features table on next page for additional information.

## LAMP SPECIFICATIONS

LAMP NUMBER	CORRELATED COLOR TEMPERATURE (CCT)	DESCRIPTION	L70 LED LIFE
24K	2400K	Incandescent White	60,000 hours
27K	2700K	Warm White	
30K	3000K	Warm White	
35K	3500K	Neutral White	
40K	4000K	Neutral White	
45K	4500K	Neutral White	
50K	5000K	Cool White	
57K	5700K	Cool White	40,000 hours
R	Red	Red (621nm)	
G	Green	Green (525nm)	
B	Blue	Blue (470nm)	
A	Amber	Amber	

## LAMP FEATURES

LAMP TYPE	LEDs
CRI	> 90
EFFICACY	108 Lumens per Watt (Based on 35K CCT LED with Clear Lens)

## ELECTRICAL

DIMMING	0-10V, Forward / Reverse Phase, Lutron, DMX, DALI
MAXIMUM RUN (Class 1 Applications)	20' (6W), 30' (4W), 36' (3W, 2W)
MAXIMUM RUN (Class 2 Applications)	14' (6W), 24' (4W), 32' (3W), 36' (2W)
LUMINAIRE VOLTAGE	120V - 277V (UNV)
	120V (Lutron LTEA Only)

## SPECIFY PRODUCT CODE | CHOOSE FROM DROP DOWNS

SERIES	LENS / OPTICS	WATTS PER FOOT	CCT LED	DIMMING	LISTING	FINISH	LUMINAIRE LENGTH*7
LLED8200-CR	-	-	-	-	-	-	-
LLED8200-CR (LLED8200-CR)	Clear Lens (CL)	2 Watts: 216 Lumens/ft*1 (2W)	2400K (24K) 2700K (27K)	Phase Dimming: Forward / Reverse Phase (PH)	Outdoor*7 (WET)	Natural Silver*8 (NA)	Specify Length in Feet & Inches Example: 7'8"
	50% Semi-Frosted Lens (SF)	3 Watts: 324 Lumens/ft*1 (3W)	3000K (30K) 3500K (35K)	0-10V: 100% - 1% (10V) Hi-Lume 1% 2 Wire*2 (LTEA)	Outdoor IP67*7 (IP67)	Polished (PA) White (WH)	
	100% Frosted Lens: Line of Light (F)	4 Watts: 432 Lumens/ft*1 (4W)	4000K (40K) 4500K (45K)	Hi-Lume 1% 3 Wire*3 (L3DA) Hi-Lume Premier 0.1% JA8*4 (L3D0)		Satin / Silver (SA)	
		6 Watts: 648 Lumens/ft*1 (6W)	5000K (50K) 5700K (57K)	JA8 0-10V (JA8-10V)		Black (BK)	
			Red (R) Green (G) Blue (B) Amber (A)	JA8 Hi-Lume 1% 2 Wire*2 (JA8-LTEA) DMX-512*5 (DMX) DALI*6 (DALI)			

\*1 Lumens per foot based on 35K CCT LED with Clear Lens.

Example: 108 Lumens x 3 Watts = 324 Lumens per Foot

\*2 (LTEA, JA8-LTEA) 40 watt max Lutron Hi-Lume 1% 2 Wire #LTEA4U1UKL-CV240

\*3 (L3DA) 40 watt max Lutron Hi-Lume 1% 3 Wire #L3DA4U1UKL-CV240

\*4 (L3D0) 96 watt max Hi-Lume Premier 0.1% #L3D0-96W24V-U

\*5 Default DMX address of each fixture is 001.

Consult third party DMX commissioner to modify DMX address at time of installation.

\*6 DALI commissioning to be performed by a third party at time of installation.

CALI does not provide DALI commissioning.

\*7 Run lengths required for Wet Location and IP67 rated luminaires.

\*8 Standard Finish: Natural Silver if left blank.

## DIMMING SELECTION

- Phase, 0-10V, & JA8 0-10V
- DMX-512 & DALI
- Lutron LTEA
- Lutron L3DA
- Lutron L3D0

## PRODUCT CODE

PH, 10V, JA8-10V  
DMX, DALI  
LTEA, JA8-LTEA  
L3DA  
L3D0

## LINKS

- <http://www.calilighting.com/assets/pdf/drivers/Drivers-Brochure.pdf>
- <http://www.calilighting.com/assets/pdf/drivers/DRV100-E.pdf>
- <http://www.calilighting.com/assets/pdf/LutronDrivers/Lutron-LTEA.pdf>
- <http://www.calilighting.com/assets/pdf/LutronDrivers/Lutron-L3DA.pdf>
- <http://www.calilighting.com/assets/pdf/LutronDrivers/Lutron-L3D0.pdf>

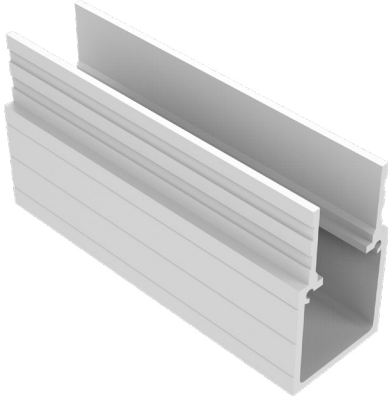
## CALIFORNIA ACCENT LIGHTING, INC.

2820 E. Gretta Lane, Anaheim, CA 92806

ph. 800.921.CALI (2254) | fx. 714.535.7902 | info@calilighting.com | calilighting.com

© CALI. All rights reserved. CALI reserves the right to make changes or withdraw specifications without prior notice.

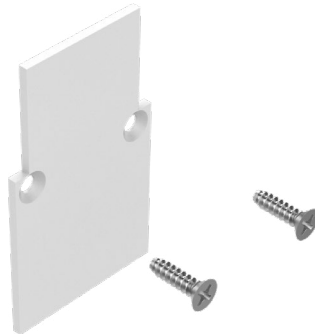
## MOUNTING ACCESSORIES (Sold Separately)



8' Luminaire Housing  
(LLED8200-CR-LH-X-8')  
X = Specify Finish (NA, PA, WH, SA, BK)

8' LUMINAIRE HOUSING		
PART #	FINISH	QTY.
LLED8200-CR-LH-8' -	/	

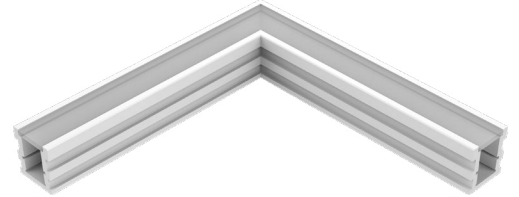
**Note:** Available in field cuttable 8' segments. Required for concrete recessed applications. Standard Finish: NA if left blank.



Luminaire Housing End Cap  
(LLED8200-CR-LH-EC-X)  
X = Specify Finish (NA, PA, WH, SA, BK)

LUMINAIRE HOUSING END CAP		
PART #	FINISH	QTY.
LLED8200-CR-LH-EC -	/	

**Note:** Specify 1 End Cap for each run termination. Standard Finish: NA if left blank.

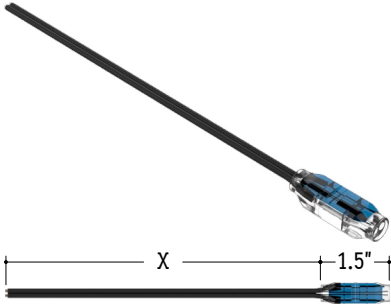


90° Mitered Corner  
(LLED8200-CR-90D)

90° MITERED CORNER	
PART #	QTY.
LLED8200-CR-90D	/

**Note:** Luminaire specification options such as wattage, finish, and lens will be matched. Long edge of mitered corner measures 12". See Design Guidelines for details.

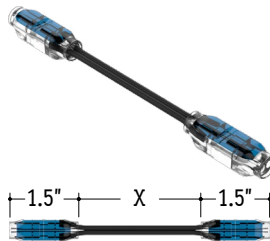
## CONNECTORS (Sold Separately - Click on Image to View Installation Cut Sheet)



Wet Power Connector (20/2 Gauge Wire)  
(LLED8200-PC-WET-X)  
X = Specify Length, 36" Standard

WET POWER CONNECTOR		
PART #	LENGTH	QTY.
LLED8200-PC-WET -	/	

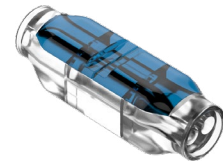
**Note:** Leave Length blank for standard option (36").



Wet Continuous Connector (20/2 Gauge Wire)  
(LLED8200-CC-WET-X)  
X = Specify Length, 3" Standard

WET CONTINUOUS CONNECTOR		
PART #	LENGTH	QTY.
LLED8200-CC-WET -	/	

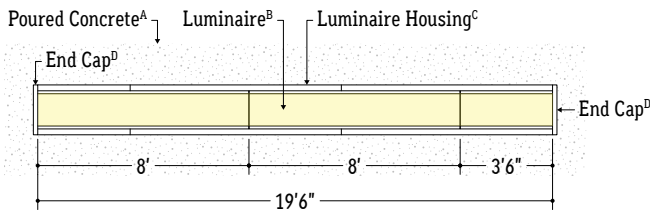
**Note:** Leave Length blank for standard option (3").



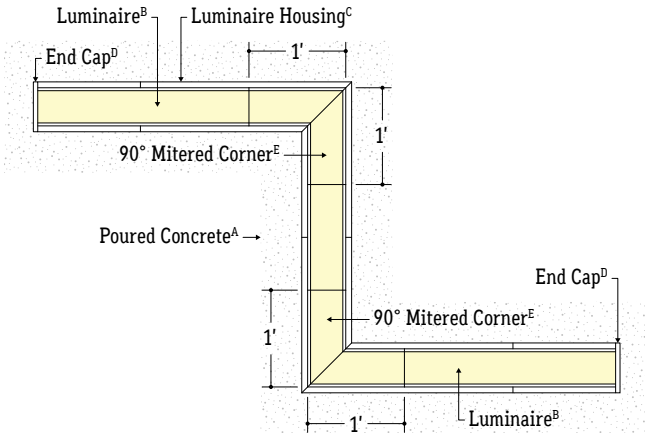
Wet Splice Connector  
(LLED8200-SC-WET)

WET SPLICE CONNECTOR	
PART #	QTY.
LLED8200-SC-WET	/

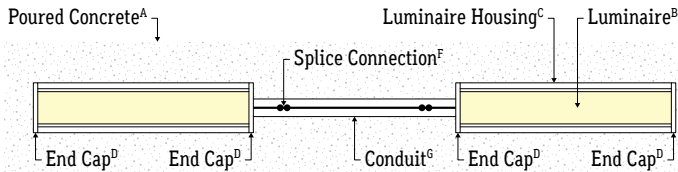
## LINEAR CONFIGURATION



## MITERED CONFIGURATION



## SPLICE JUMPER CONFIGURATION



## KEY

<b>A</b>	<b>Poured Concrete:</b> Concrete is poured around luminaire housing, then luminaire is installed into housing. Refer to installation instructions for additional information on poured concrete requirements.
<b>B</b>	<b>Luminaire:</b> Luminaires typically ship assembled to specified lengths in standard 8' segments.
<b>C</b>	<b>Luminaire Housing:</b> Holds luminaire in place. Required for concrete recess applications. Field cut and miter to desired lengths.
<b>D</b>	<b>End Cap:</b> Used to terminate a run.
<b>E</b>	<b>90° Mitered Corner:</b> Standard 90° Mitered Corner. Mitered Corners ship assembled to specifications and ready to be connected to a run.
<b>F</b>	<b>Splice Connection:</b> LLED8200-SC-WET. Used to splice connections between luminaires or luminaire segments.
<b>G</b>	<b>Conduit:</b> By others. Used to connect luminaire power leads to remote power source, or to span a gap with a splice connection inside. Refer to installation instructions for additional information on when to use conduit.

**Note:** Drawings not to scale.