



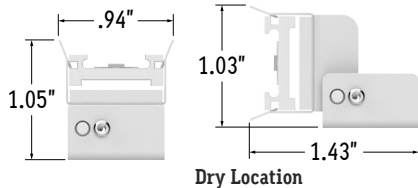
CALIFORNIA  
ACCENT  
LIGHTING  
INC

# LLED8600-UC-MC-ADJ | INSTALLATION

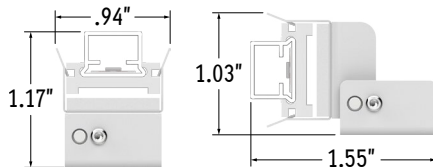
Perspective View



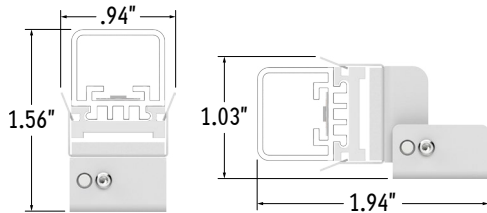
Assembled End Views



Dry Location



Wet Location (4.5W)



Wet Location (5.5W)

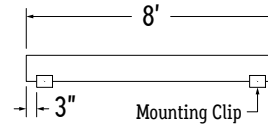
## DRY LOCATION

1. Measure area where luminaire will be installed. Use a chalk line to ensure a straight installation. Mark location where mounting clips will be installed along chalk line.

2. Use 1 mounting clip every 4' or 2 if fixture is shorter than 8'.

**Note:** For outward or downward facing applications, use 1 mounting clip every 2'.

**Note:** For vertical applications, use a stopper at the bottom to prevent fixture from sliding.

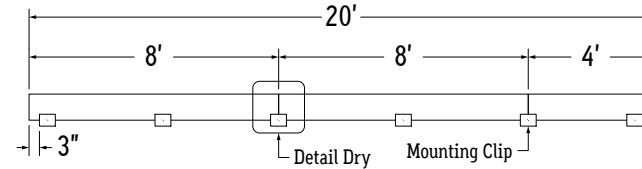


3. Use 1 mounting clip every 4' +1 if fixture is longer than 8'.

**Example:** 8' + 8' + 4' = 2 MC + 2 MC + 1 MC + 1 MC = 6 MC total.

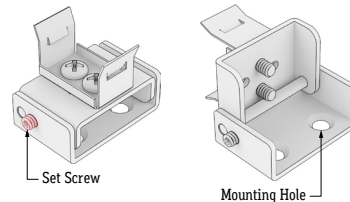
Use a mounting clip at the joint between two fixtures.

**Note:** For applications facing outward or downward, use 3 mounting clips per fixture segment.



4. Loosen set screw with included Allen Wrench and tilt top to reveal mounting holes.

**Note:** Do not remove Set Screw.



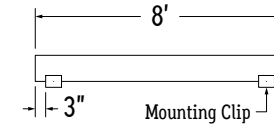
## WET LOCATION

1. Measure area where luminaire will be installed. Use a chalk line to ensure a straight installation. Mark location where mounting clips will be installed along chalk line.

2. Use 1 mounting clip every 4' or 2 if fixture is shorter than 8'.

**Note:** For outward or downward facing applications, use 1 mounting clip every 2'.

**Note:** For vertical applications, use a stopper at the bottom to prevent fixture from sliding.

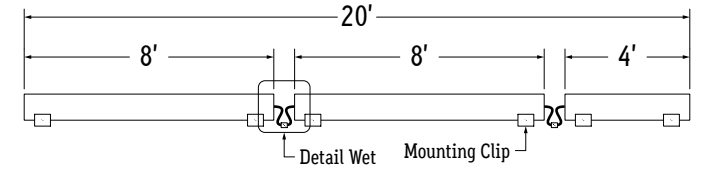


3. Use 2 mounting clips per fixture.

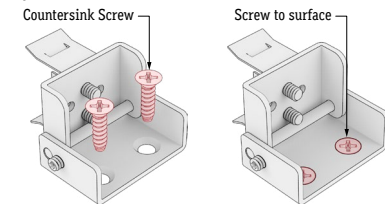
**Example:** 8' + 8' + 4' = 2 MC + 2 MC + 2 MC = 6 MC total.

Push fixtures together at each wet location connection, leaving a 0.5" gap between fixtures.

**Note:** For applications facing outward or downward, use 3 mounting clips per fixture segment.



6. Screw mounting clips to surface.



7. Adjust mounting clip to desired angle, then tighten set screw to lock in place.

**Tip:** Use an angle finder or create a jig to ensure accuracy of angles.

